

Welsh Ports Group

“Connecting Wales”



Produced by the
British Ports Association & UK Major Ports Group

CONTENTS

- The Welsh Ports Group
- Representing a vital sector
- Supporting business and industry
- The Welsh ports industry
- Types of port
- Connections and infrastructure investment
- Environment and planning
- Supporting a progressive industry
- Welsh ports directory



The Welsh Ports Group

The Welsh Ports Group is the only forum representing the views of this important sector in Wales. Coordinated by the British Ports Association and the UK Major Ports Group, it holds regular meetings with the Welsh Government and key decision makers across the planning, transport and maritime sectors.



Representing a vital sector

The **Wales Bill** published in June includes proposals to devolve most ports policy functions to the Welsh Government. The Welsh Port Group's view on this remains neutral. What really matters is the policy framework.

We expect this to translate into a stable and market-led Government approach to ports policy, maintaining the mixed ownership model and a level playing field for all Welsh ports without disadvantaging them against ports outside Wales. The current English and Welsh policy framework is a good template for this policy.

The Welsh Government has given positive indications that it would maintain the market-led approach to ports and we are keen to open a dialogue. The new Bill will provide a focus for discussion.

Also of interest are the arrangements and resourcing of a new Ports Unit in Wales which would have a key consenting role, overseeing Harbour Revision Order applications. We look forward to discussing all these points with our colleagues in the Welsh Government.

The EU is another source of legislation. The Port Services Regulation (PSR) currently under consideration in Brussels represents a very unwelcome restriction on the ability of many of the larger ports in Wales to make market choices about service provision and charging. The assistance of Welsh MEPs has been much appreciated in arguing the case for the ports sector.



Welsh Ports Facts and Figures

- In 2014 Welsh ports imported and exported 54 million tonnes of cargo, around 10% of the total of UK throughput & equivalent to 18 tonnes of cargo per person in Wales.
- In 2013 Welsh ports accounted for 1.2% of Welsh GVA, amounting to £560 million.
- The ports sector in Wales currently creates around 11,000 direct, indirect and induced jobs.

Supporting business and industry



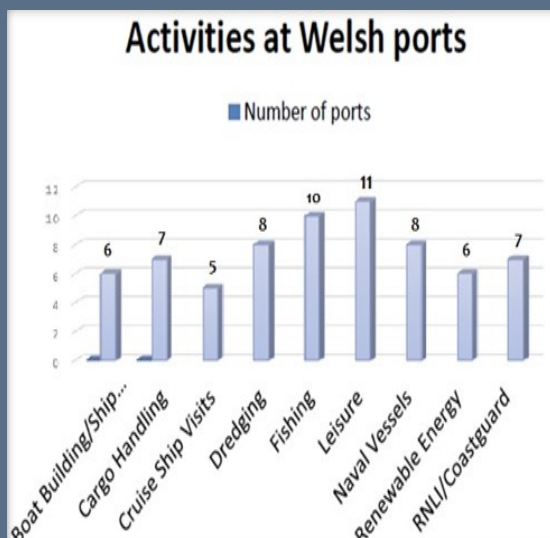
Each year Welsh ports handle **10%**, or around **54m tonnes**, of UK freight and this includes significant volumes of ferry traffic, oil and gas, containers, steel, biomass, bulks as well as other offshore renewable cargoes. Ports also provide vital facilities for cruise ships, marine leisure activities and the fishing industry. These are diverse and fundamental trades, supporting almost **11,000 direct, indirect and induced jobs** as well as sustaining vital parts of the economy.

The Welsh and UK economies are served by distribution chains spanning the globe – gas from Qatar, iron ore from Australia and the Americas, building products and other vital trades to and from Europe, oil and fuel to and from all parts of the world including the US, South America, West Africa and Asia, and ‘motorways of the sea’ ferry services to Ireland. Per tonne of cargo moved, shipping has the lowest environmental impact. Sustainability in our economy is therefore strongly linked with investment in port areas and the infrastructure that serves them.

The UK provides a vital ‘land bridge’ link for freight and goods between continental Europe and Ireland. Welsh ferry ports are vital to the link. These routes are also important passenger gateways and in 2015 Welsh ports handled over **2.8 million passenger journeys** on ferries.

The Welsh ports industry

Ports and harbours are products of their locations. They vary widely in size and type of activity and can have local, regional and sometimes national significance.



Apart from the commercial operations normally associated with ports – the handling of freight and passengers – they carry out many important statutory duties, ranging from ensuring navigational safety to the operation of sophisticated security and environmental regimes. They provide facilities for a wide range of users and support a variety of businesses.

Port locations in Wales



Types of port

There are three models of port ownership:

Trust

A trust port is an independent statutory body governed by its own local legislation and controlled by an independent board. Trust ports have a high degree of accountability and follow government guidelines on how they should demonstrate accountability and commercial progress. Trust ports in Wales vary in size and include Milford Haven, Neath, Newport, Caernarvon and Saundersfoot.

Privatised

There is a substantial privatised port sector in Wales. Privatised ports are privately owned companies, sometimes part of a larger ports group, for example, the south Wales ports of Associated British Ports (ABP) which include the operations at Barry, Cardiff, Newport, Port Talbot and Swansea. Other privately owned ports include the Stena Line Ports of Holyhead and Fishguard and the independently owned port of Mostyn.

Municipal

Municipal ports are run by local authorities. They have their own governance guidelines which emphasise the benefits of both financial independence through the ring-fencing of accounts as well as the setting up of corporate structures with a more traditional board approach, allowing the executive to work with a board with a range of maritime and business expertise. Examples of Welsh local authorities with ports interests include Conwy and Isle of Anglesey councils. For the most part, local authority ports in Wales are smaller harbours focussed on leisure and fishing.

All exist side by side in Wales and their status does not affect their independence.



Annual throughput in Wales 2014

<u>Port</u>	<u>Million Tonnes</u>
Barry	0.3 m
Cardiff	1.9 m
Fishguard	0.3 m
Holyhead	2.8 m
Milford Haven	39.0 m
Mostyn	0.02 m
Neath	0.2 m
Newport	2.7 m
Port Talbot	5.1 m
Swansea	0.4 m
Other ports	0.3 m
<u>Wales Total =</u>	<u>54 Million Tonnes</u>



Connections and infrastructure investment



Transport and infrastructure are critical to a successful economy and Welsh ports are an important gateway for international trade. Nationally and locally, the Welsh government's ability to invest in the transport network is a key factor.

The overwhelming majority of goods and passengers enter and leave ports by roads which are therefore vital to our success.

In recent years there have been a number of initiatives and government plans to bolster transport, energy and regeneration. These have mostly been very welcome although funding remains relatively modest. Connectivity covers many aspects, including not only improvements to the M4, rail electrification but also investment in high speed broadband. All contribute to ensure that ports and the Welsh economy remain competitive and dynamic.

Impact of the Welsh ports industry 2014

<u>GVA (£million)</u>					
	Direct	Indirect	Induced	Total	% of GVA
Wales	140	220	190	560	1.2%
<u>Employment</u>					
	Direct	Indirect	Induced	Total	% of Employment
Wales	2,600	4,500	3,800	10,900	0.9%

Environment and planning



**Per tonne of cargo moved,
shipping has the lowest
environmental impact**



Welsh ports have an excellent record on the environment and the industry is committed to building on its good environmental performance. Port developments are subject to a thorough planning and consenting regime. We are keen that these processes are streamlined as much as possible to help ports press ahead with projects. To function and develop ports often need specific marine licences granted by Natural Resources Wales. These can be for dredging to maintain safe access for ships or for new developments.

The Welsh Government is currently reviewing the marine license fee regime and there could be some increases in costs for ports.

There remain a high number of activities which require licences and we have been urging the Welsh Government to introduce a number of exemptions for low risk activities, as is the case in England. We are also keen that as part of the review the consenting team retains a strong focus on customer service and its own performance levels. Licensing conditions for port development consents need to be proportionate.

Separately the Welsh Government is in the process of producing its own National Marine Plan. The Plan will provide a strategic framework for all coastal activities in Wales and is required to balance socio economic activities and sustainability. The current draft of the Plan recognises important port and shipping activities. Our view is that some of the general policies are too prescriptive and we have written to officials outlining our concerns. It is vital that this Plan does not limit development and growth.

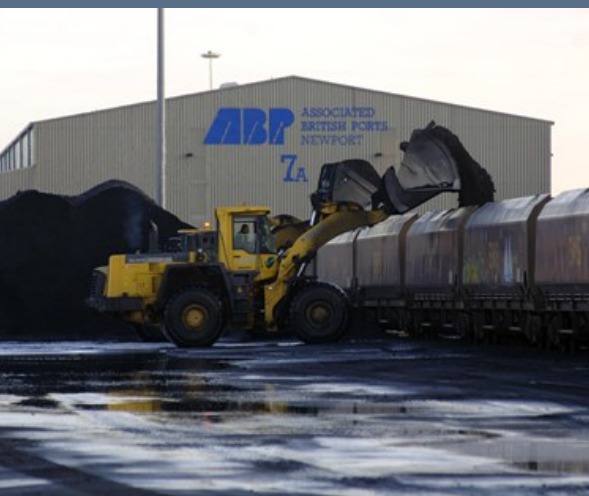
Supporting a progressive industry



As a means of promoting cooperation with the Welsh Government, the Welsh Ports Group has produced a number of suggested **Shared Policy Objectives** that would help sustain the Welsh Ports industry's economic contribution and future. **These include:**

- Regular industry/government dialogue
- Maintenance of the current market-led approach to ports policy
- Support for the current mix of different port ownership models
- Streamlining of the planning and marine consents system
- Promoting a marine protection strategy which balances environmental, economic and social needs
- Promoting a policy framework which allows Welsh ports to remain competitive with those outside Wales
- Achieving greater recognition of the importance of improved road and rail connectivity schemes for Welsh ports to encourage increased freight and passenger movements
- Exchanging information on growth opportunities in port markets.

We look forward to and welcome discussions on these objectives with key organisations and our colleagues in the Welsh Government



Welsh ports directory



ABP Cardiff

Queen Alexandra House, Cargo Road, Cardiff, CF10 4LY

Director ABP South Wales: Matthew Kennerley

Port Manager: Chris Green (cgreen@abports.co.uk)

Telephone: 0870 609 6699

Website: www.abports.co.uk and www.southwalesports.co.uk

Types of traffic handled: dry bulks, steel, forest products, liquid bulks



ABP Port Talbot

Puckey House, Port Talbot Harbour, Port Talbot , SA13 1RB

Director ABP South Wales: Matthew Kennerley

Port Manager: Callum Couper (ccouper@abports.co.uk)

Telephone: 0870 609 6699

Website: www.abports.co.uk and www.southwalesports.co.uk

Types of traffic handled: processed slag, sand, cement, steel, and heavy-lift cargoes.



ABP Swansea

Port Office, Lock Head, King's Dock, Swansea , SA1 1QR

Director ABP South Wales: Matthew Kennerley

Port Manager: Callum Couper (ccouper@abport.co.uk)

Telephone: 0870 609 6699

Website: www.abports.co.uk and www.southwalesports.co.uk

Types of traffic handled: heavy-lift cargoes, forest products, minerals and ores, dry bulks.



ABP Newport

Port House, Alexander Dock, Newport, NP20 2UW

Tel: 0870 609 6699

Ralph Windeatt - Head of Commercial—rwindeatt@abports.co.uk

Telephone: 02920 835 062

Website: www.abports.co.uk and www.southwalesports.co.uk



ABP Barry

Barry Port Office, Atlantic Way, Barry, CF63 3US

Tel: 0870 609 6699

Ralph Windeatt - Head of Commercial—rwindeatt@abports.co.uk

Telephone: 02920 835 062

Website: www.abports.co.uk and www.southwalesports.co.uk



Saundersfoot Harbour Commissioners

The Harbour, Saundersfoot, Pembrokeshire, SA69 9HE

Main Tel: 01834 812 094—Website: www.saundersfootharbour.co.uk

Contact: Mr M Davies, Chief Executive Officer—
mdavies@saundersfootharbour.co.uk

Mr P Evans – Chairman—Mr E Sangster – Vice Chairman

Types of Traffic handled: Leisure, fishing and commercial pleasure boats.



Conwy Harbour (Conwy County Council)

Harbour Office, Conwy Quay, Conwy, LL32 8BB

Main Tel: 01492 596 253

www.conwy.gov.uk/harbourandseaboard

Contact: Matthew Forbes, Harbour Master—
harbwr.conwy.harbour@conwy.gov.uk

Barry Tuson, Deputy Harbour Master—barry.tuson@conwy.gov.uk



Port of Fishguard – Stena Line Ports Ltd

Fishguard Harbour, Goodwick, Pembrokeshire, SA64 0BU

Main Tel: 01348 404425

Website: www.fishguardport.com

Contact: Ian Davies, Route Manager—ian.davies@stenaline.com

Types of Traffic handled: Ro-Ro.



Holyhead Port – Stena Line Ports Ltd

Stena House, Station Approach, Holyhead, Anglesey, LL653BW

Main Tel: 01407 606 660

Website: www.holyheadport.co.uk

Contact: Captain Wyn Parry, Ship and Port Manager—01407 606 660,
wyn.parry@stenaline.com

Captain Brian McCleery, Harbour Master—01407
 6066775, brian.mccleery@stenaline.com

Types of Traffic handled: Ro-ro, general cargo, bulk



Isle of Anglesey County Council Harbours

Council Offices, Llangefni, Anglesey, LL77 7TW

Principal Harbours: Amlwch Harbour, Beaumaris Pier and Menai Bridge Pier

Main Tel: 01248 752 320

Website: www.anglesey.gov.uk/leisure/maritime-services

Contact: John Owen, Senior Maritime Officer—joxht@anglesey.gov.uk

Types of Traffic handled: Leisure, fish.



Port of Milford Haven

Gorsewood Drive, Milford Haven, Pembrokeshire, SA73 3EP

Main Tel: 01646 696100—Website: www.mhpa.co.uk

Contact: Alec Don, Chief Executive—01646 696 100, alec.don@mhpa.co.uk

Andy Jones, Deputy Chief Executive—01646 696 100, andy.jones@mhpa.co.uk

Types of Traffic handled: Bulk liquids, ro-ro, fish, dry bulks, project cargoes, general cargo, and cruise.



Port of Mostyn

Coast Road, Holywell, Flintshire, CH8 9HE

Main Tel: 01745 560 335—Website: www.portofmostyn.co.uk

Contact: Mr. Jim O'Toole, Managing Director—jim.otoole@portofmostyn.com

Captain Roy Hyde-Linaker, Harbour Master - harbourmaster@portofmostyn.com

Mr. William Calderbank, Port Manager—will.calderbank@portofmostyn.com

Types of Traffic handled: General cargo, bulks, ro-ro, project cargoes – offshore windfarm service bases.



Neath Port Authority

Woodfield House, Castle Walk, Neath, West Glamorgan, SA11 3LN

Main Tel: 01639 633 486—Website: www.npt.gov.uk

Contact: Mr GT Pullen, Chairman

Mr R Minty, Manager

Mr RW Hemming, Harbour Master

Email: portofneath@btconnect.com

Newport Harbour Commissioners

24 Bridge Street, Newport, Wales, NP20 4SF

Main Tel: 01633 265 323—Website: www.newportharbourcommissioners.org.uk

Contact: Colin Crick, Chairman—Jill Lloyd, Clerk to the Commission

jilloyd@walterhunter.co.uk

Types of Traffic handled: Conservancy services for the Port of Newport.

Contact us:



British Ports Association
30 Park Street, London, SE1 9EQ
Website: www.britishports.org.uk
Tel. 020 7260 1780
E-mail: info@britishports.org.uk



UK Major Ports Group
30 Park Street, London, SE1 9EQ
Website: www.ukmajorports.org.uk
Tel. 020 7260 1785
E-mail: info@ukmajorports.org.uk

